

Installation & Operations Manual for Rear View Mirror

Halo Rear View Mirror
 18053 – Defender Clamp
 18055 – 1.625" Clamp
 18056 – 1.75" Clamp
 18057 – 2" Clamp
Round Tube Clamp Mounting:
 18058 – Pro-Fit Clamp
 18059 – X3 Clamp

Contents:

Mirror



Round Tube Roll cage clamp



Mirror Arm



M8x20mm Button head Bolt (1)



M8x25mm Socket head Bolt (1)

Installation & Operations Manual for Rear View Mirror

Pro-Fit/Defender Clamp Mounting:

Contents:

Mirror



Pro-Fit Clamp Bracket A



Defender Clamp Bracket A



Clamp Bracket B



Mirror Arm



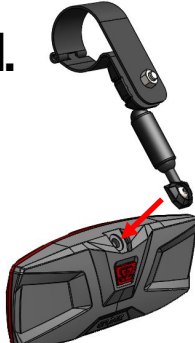
M8x20mm Button head Bolt (1)



M8x25mm Socket head Bolt (1)

Installation: For vehicles with round front cross tubes.

1.



Screw Mirror Arm into Mirror using M8x20mm button head bolt.

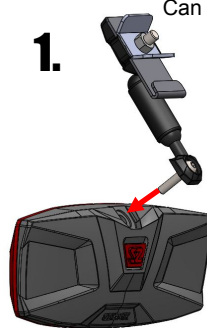
2.

The round tube roll cage clamp mounts to the middle of the upper front cross tube.



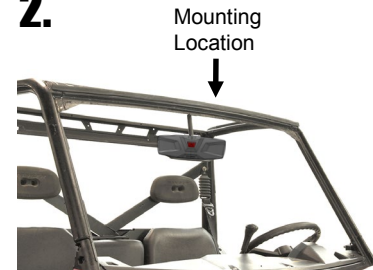
Installation: Full & Mid-Sized Rangers with Pro-Fit Roll Cage Can Am Defender with Profiled Roll Cage.

1.



Screw Mirror Arm into Mirror using M8x20mm button head bolt.

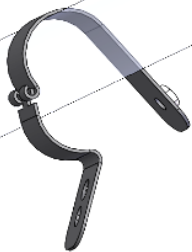
2.



The Pro-Fit and Defender mirror clamp mounts to the middle of the bent sheet metal cross bar.

3.

Mounting Location



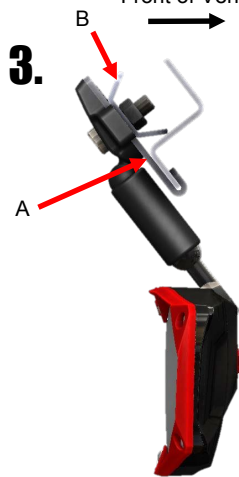
Place round roll cage clamp around front cross tube.

4.



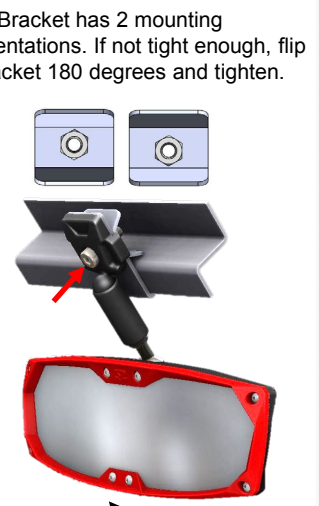
Line up the mirror with arm attached and install using M8 x 25mm socket head bolt. Adjust mirror as necessary.

3.



Place Pro-Fit or Defender clamp bracket A and B on the bent sheet metal middle cross bar as shown.

4.



Line up the mirror with arm attached and install using M8 x 25mm socket head bolt. Adjust mirror as necessary.